

Mid-Way House Program

Finding Home.....Far Away From Home
Since August 2013

JIHANE ISSEID | MID-WAY HOUSE PROGRAM MANAGER

أبعاد
ab'ad





What is it about?

The Mid-way Transition House (Al Dar) is a free, safe, supportive temporary house for women & girls at risk or survivors of Gender-Based Violence (GBV).

How can the Dar break the cycle of violence?

- The services offered by Al Dar create an **Empowering Environment** that provides women with an opportunity to grow, mature, and escape abusive situations.
- Al Dar contributes to building **community awareness** and **strengthening local communities** to better respond to GBV.



What Types of services we offer?

- Immediate basic Assistance
- Listening and crisis counseling services
- Psycho-social support and mental health services
- Health & medical health services
- Legal support
- Education & Children Care Program
- Referrals for provision of complementary welfare social services
- Community capacity development and education



Who can benefit from the services of the MWH

- **Female adult** of any age.
- **Girl adolescent child (12-18)** survivor or at immediate risk of GBV **following a coordination with UPEL.**
- **Girl child (0-12)** if accompanied with her mother or with a protective female family member following a **coordination with UPEL.**
- **Boy child (0-8)** can be accepted with his mother or a protective female family member following a **coordination with UPEL.**

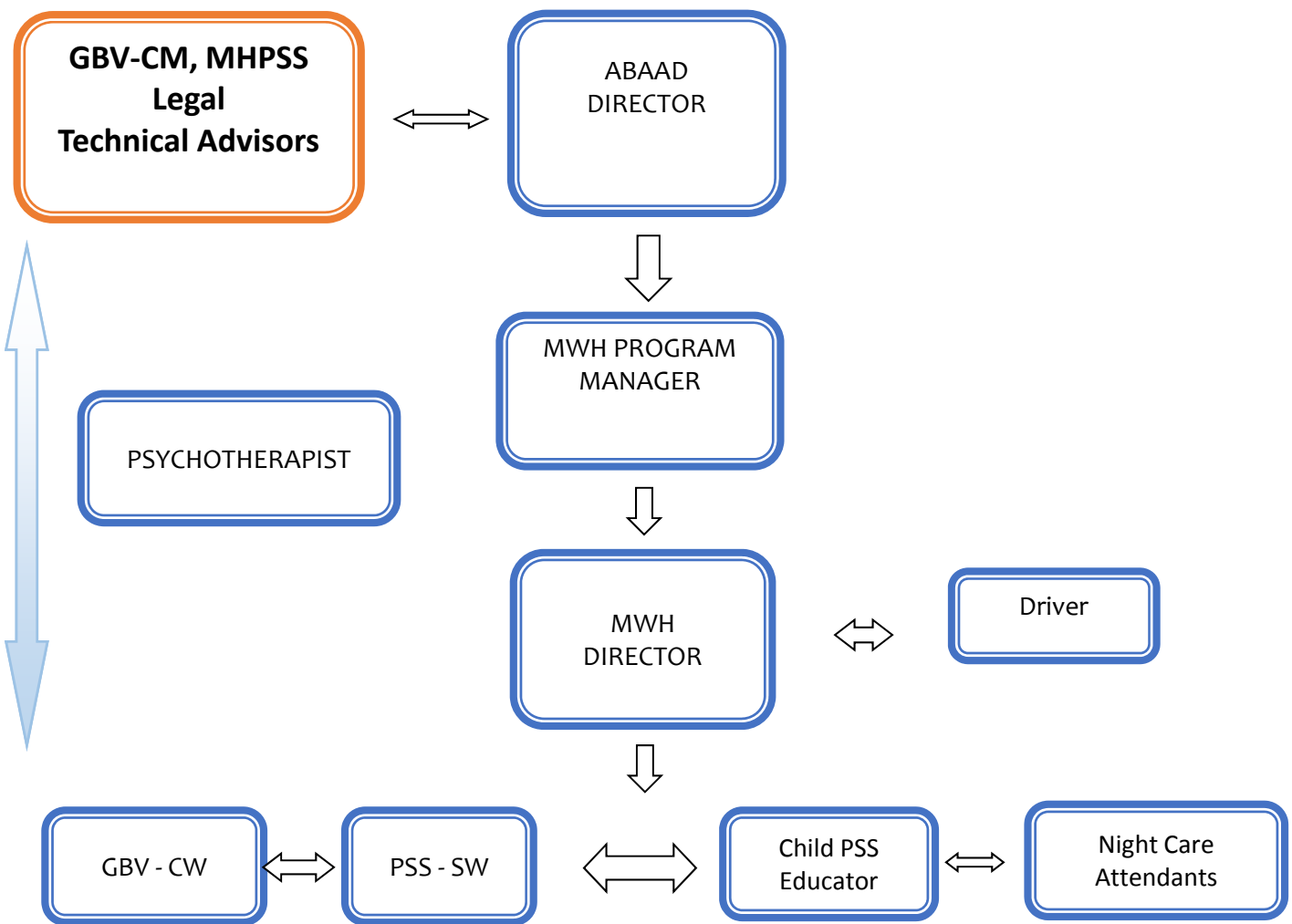


Guiding Principles of the Mid-Way House

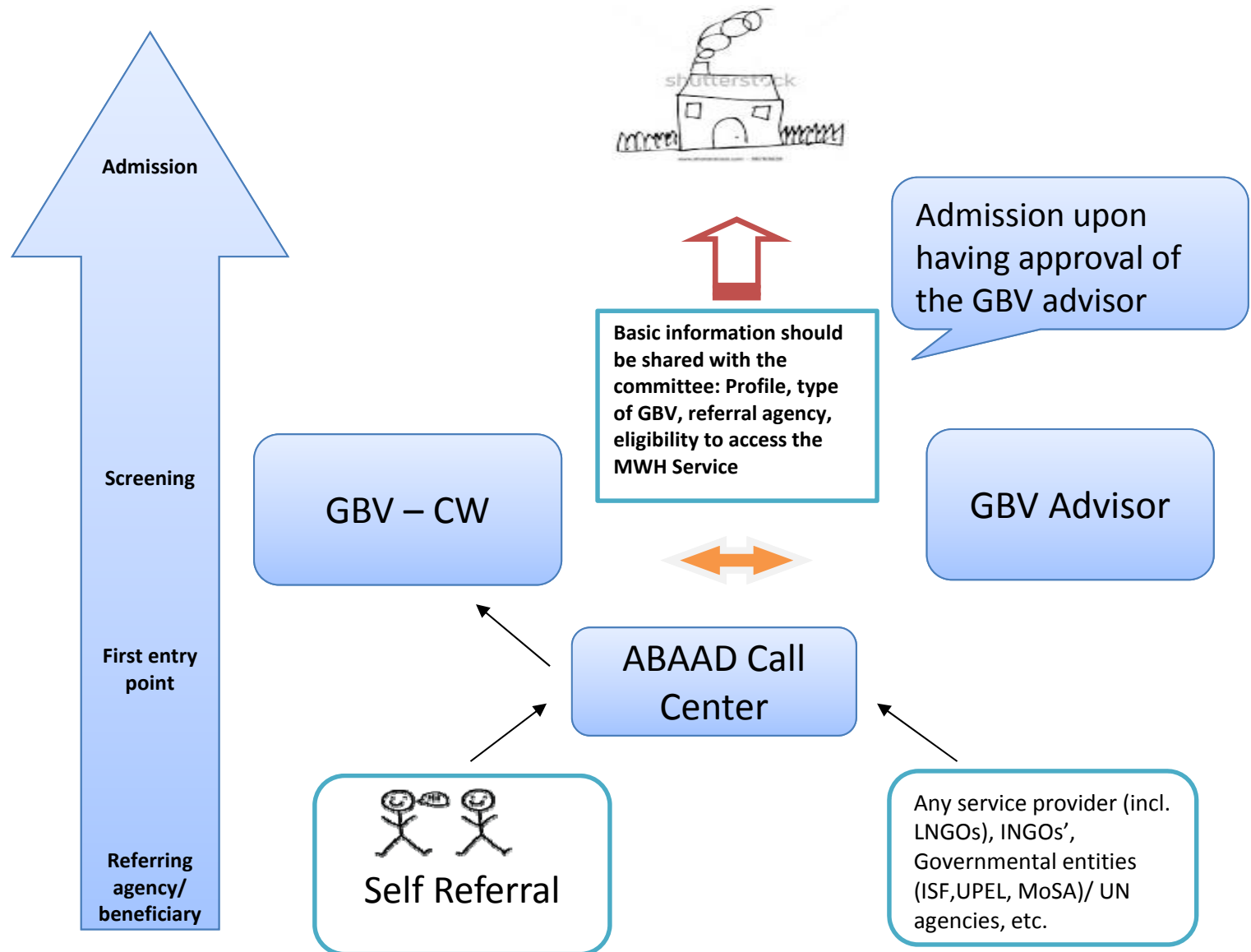
- Ensure the **safety** of the survivor and her family at all times.
- Respect the **confidentiality** of the survivors and their family at all times.
- Al-Dar guarantees the **anonymity** of women and girls.
- Respect the **wishes, choices, rights** and **dignity** of the survivor.
- **No violence** of any kind is permitted. Al Dar ensures **inclusive** provision of services with **no exclusion** of any beneficiary on the grounds of nationality, race, class, sexuality, disability etc.
- **Best interest of the child.**



MWH Organogram



Referral & Admissions Procedure



MWH Strategy Of Intervention

The structure of the MWH strategy aims at organizing the different roles and their intersections within the system to reach the common overall objective of the program while respecting the survivor centered approach. This structure will also facilitate and define:

- the steps of intervention to be followed after each admission and the planning of activities
- the specific objectives of intervention at each step based on the international guidelines for GBV CM and MHPSS
- The M&E procedures to follow throughout the support process presented to each beneficiary.
- Survivor-centered approach is when the survivor of violence is empowered by prioritizing their needs, wishes and rights and ensuring their access to appropriate and good quality services (Ward, 2010; adapted from UNICEF, 2010.)

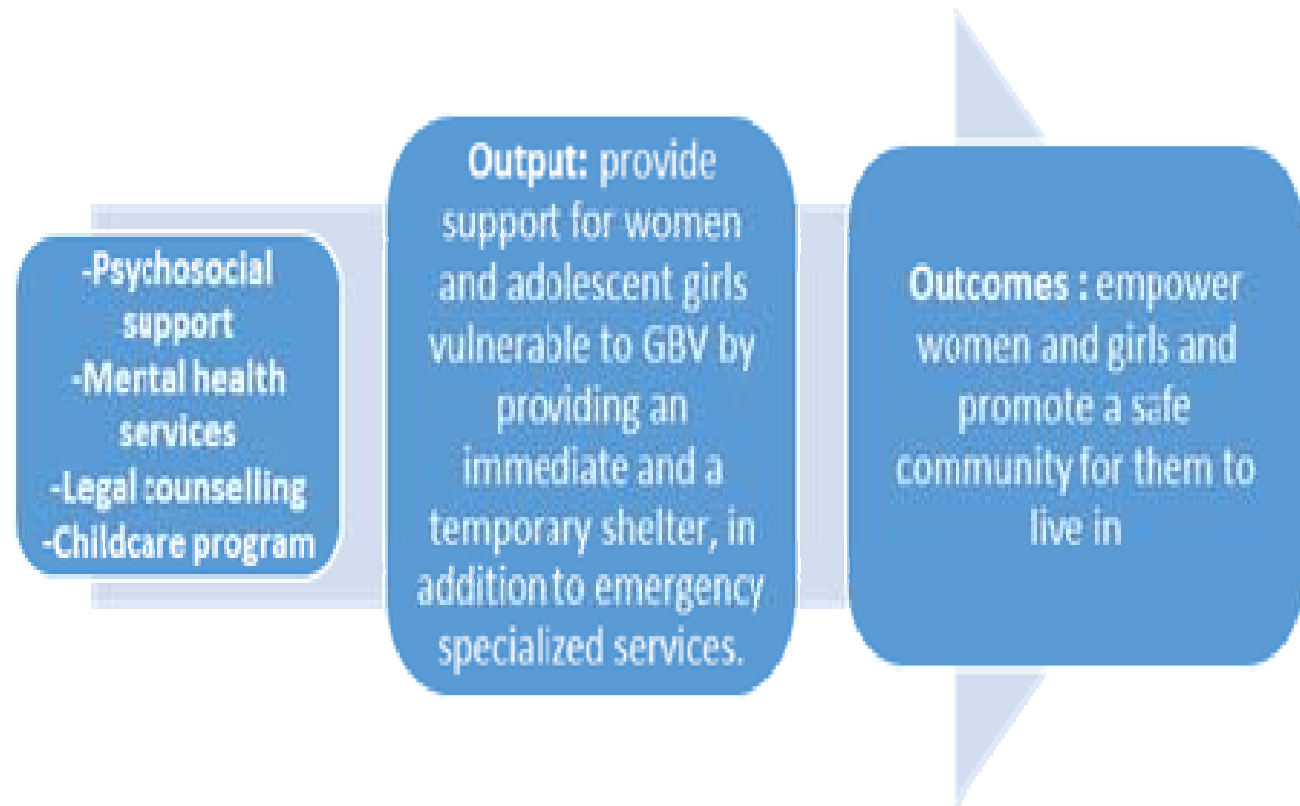


MWH Strategy Of Intervention

- **The overall objective of the intervention should be to address the physical, safety, psychosocial and legal needs of the GBV survivor and of their families while:**
 - 1-Respecting their wishes and priorities
 - 2-Reinforcing their self-help mechanisms
 - 3- Facilitating their social reintegration



MWH Strategy Of Intervention



MWH Strategy Steps Of Intervention

Step 1: Welcoming and Primary Support - SSW



Step 2: Drafting CM Action plan and tailoring MHPSS Action plan. - SSW and PSY



Step 3: Implementation of CM and MHPSS plans and external referrals as needed
PSY, SSW, SW, CCA and NCA



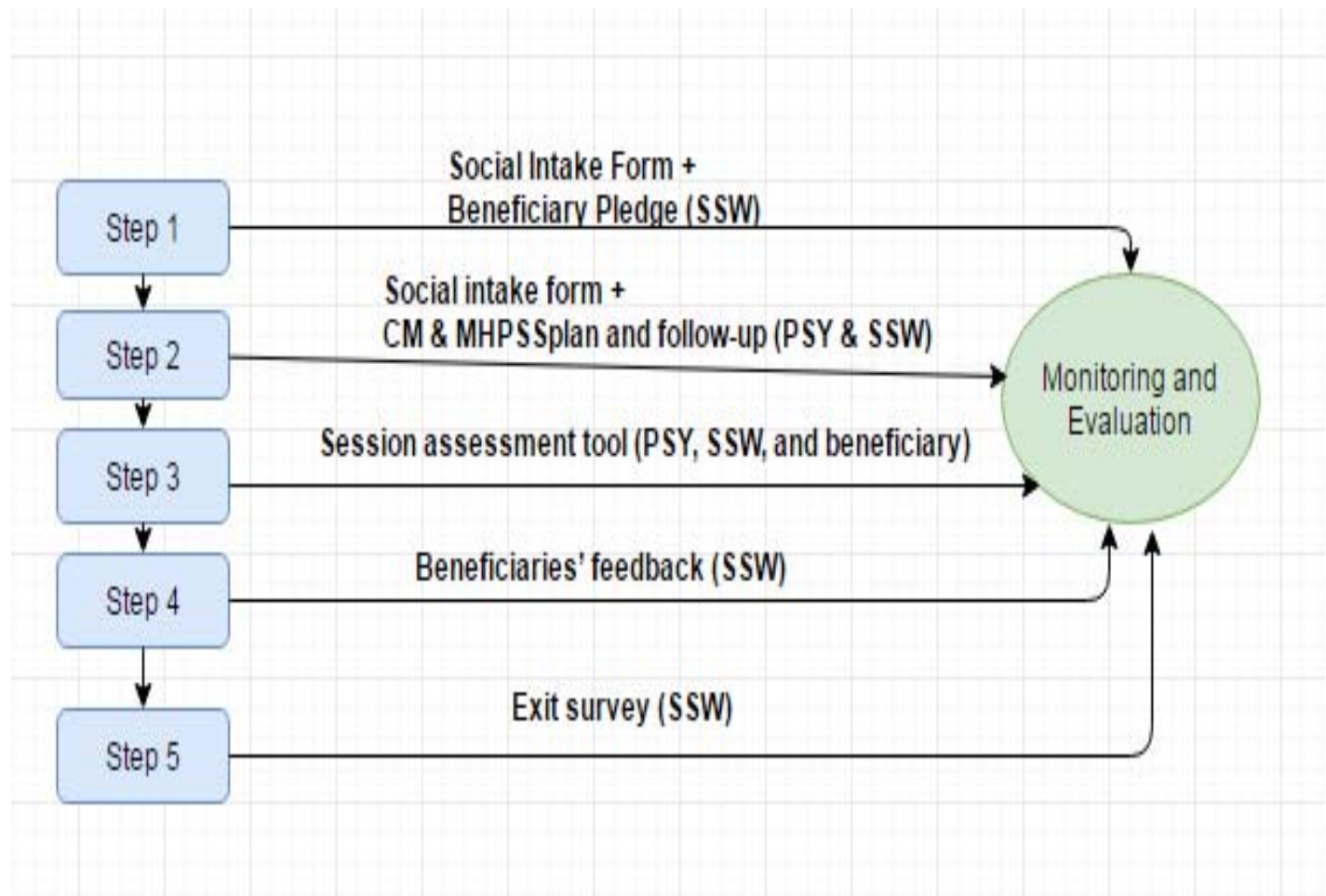
Step 4: Planning of active role/social reintegration
SW, CCA and SSW with input of PSY



Step 5: Closure
SSW



MWH Step of Intervention & M&E Tools





Questions?





THANK YOU!

NAME

أبجد
abjad

